



CASE STUDY

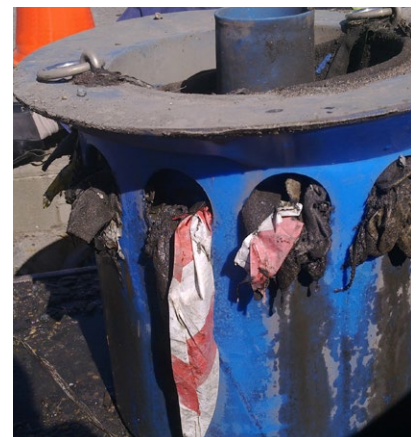
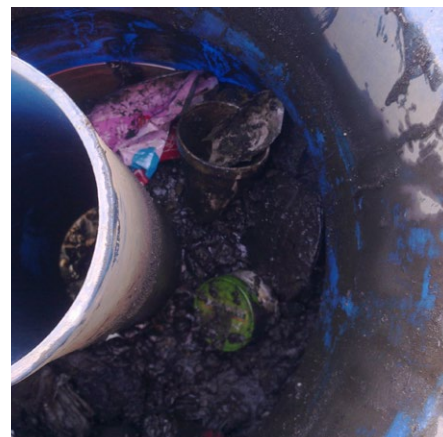
Port Facility and Container Terminal

The Situation

A wide variety of pollutants were entering the stormwater system through onsite drain pits.

The DrainSAFE™ Solution

A DrainSAFE™ device was installed in each drain pit that was identified as releasing pollution into adjacent waterways.



The Outcome

Result 6 months after installation

Captured in the DrainSAFE™ diffuser:

- sheen oil captured in the absorbent
- general rubbish including cans, packaging and food wrappers
- clothing
- other company waste
- sediment

DSCS2-210427

